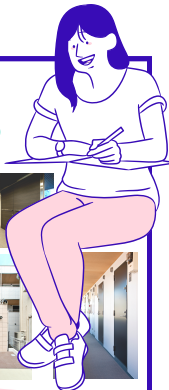


MUSASHI-KOSUGI HOUSE

Female Dormitory



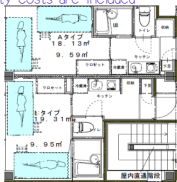
Popular station:
"Musashi-kosugi"



Monthly Rent: 42,000 yen ※Double-occupancy room (18m²/194 sq ft)
: ¥42,000/person/month

- 15 min walk to Musashi-kosugi Stn.
- 45 min to School
- 3 min walk to a convenience store
- 6 min walk to a supermarket
- On-site dormitory manager
- Management fee and Utility costs are included
- Free Wi-Fi
- Separate toilet/bathroom
- Air conditioning
- Laundry room
- Refrigerator
- Loft-style bed
- Kitchen
- Balcony
- Desk & Chair
- Wardrobe

Common room available
(for a small party too!)



For inquiries, please contact Naganuma School Student Department (gakuseibu@naganuma-school.ac.jp)



Very convenient station!

15 min

Yokohama

Musashi Kosugi



● Toyoko Line

● Yokosuka Line

Shinjuku

Shinjuku

Shinjuku

Shinjuku

Shinjuku

Shinjuku

Shinjuku

Shinjuku

Shinjuku

Shinjuku

Shinjuku

Shinjuku

Shinjuku

Shinjuku

Shinjuku

Shinjuku

Shinjuku

Shinjuku

Shinjuku

Shinjuku

Shinjuku

Shinjuku

Shinjuku

Shinjuku

Shinjuku

Shinjuku

Shinjuku

Shinjuku

Shinjuku

Shinjuku

Shinjuku

Shinjuku

Shinjuku

Shinjuku

Shinjuku

Shinjuku

Shinjuku

Shinjuku

Shibuya

Narita Airport

Tokyo

Narita Express

- Toyoko Line: 15 min to Shibuya
- Yokosuka Line: 17 min to Tokyo
- Shonanshinjuku Line: 18 min to Shinjuku, 10 min to Yokohama
- Narita express: 77 min to Narita airport
- Airport Limousine Bus: 65 min to Haneda airport

As of 2023/02/03

Shibuya Stn.※1	1 month	3 months	6 months	12 months
Commuter Pass	¥7,530	¥21,470	¥40,670	¥81,340
Student Commuter Pass. ※2	¥3,120	¥8,900	¥16,850	¥33,700

※1 Toyoko Line to Shibuya (IC) 199yen/one way.

※2 A Student commuter pass is available only for 1 year or longer course's students.

